



R&D Webinar - NESTORE Project Outcomes | 26/05/2026

Towards cumulative impact assessment of offshore wind farms



- Introduction – *Laëtitia Petit, FEM*
- Bridging the gap between governance and ecosystem modelling – *Rhoda Fofack Garcia & Sybill Henry, FEM*
- Ecosystem modelling for assessing the cumulative impact of offshore wind energy on the functioning of marine ecosystems: evolving tools that complement one another – *Nathalie Niquil, Unicaen*
- Uncertainties in models – *Raphaël Girardin, Ifremer*
- How can ecosystem services mapping support marine spatial planning? – *Yoann Baulaz & Pierre Bourdaud, FEM*
- Questions

INTRODUCTION

3 years  2022-2025



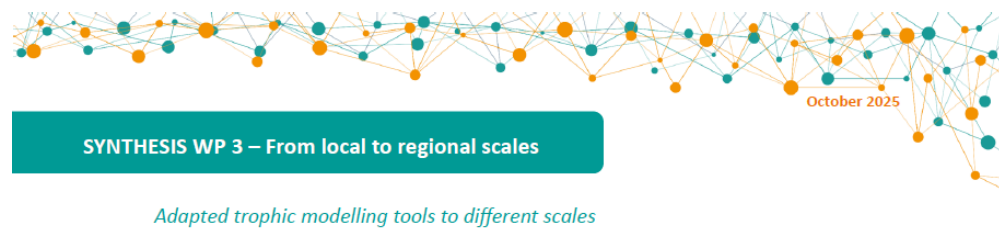
1 PhD thesis

NESTORE project

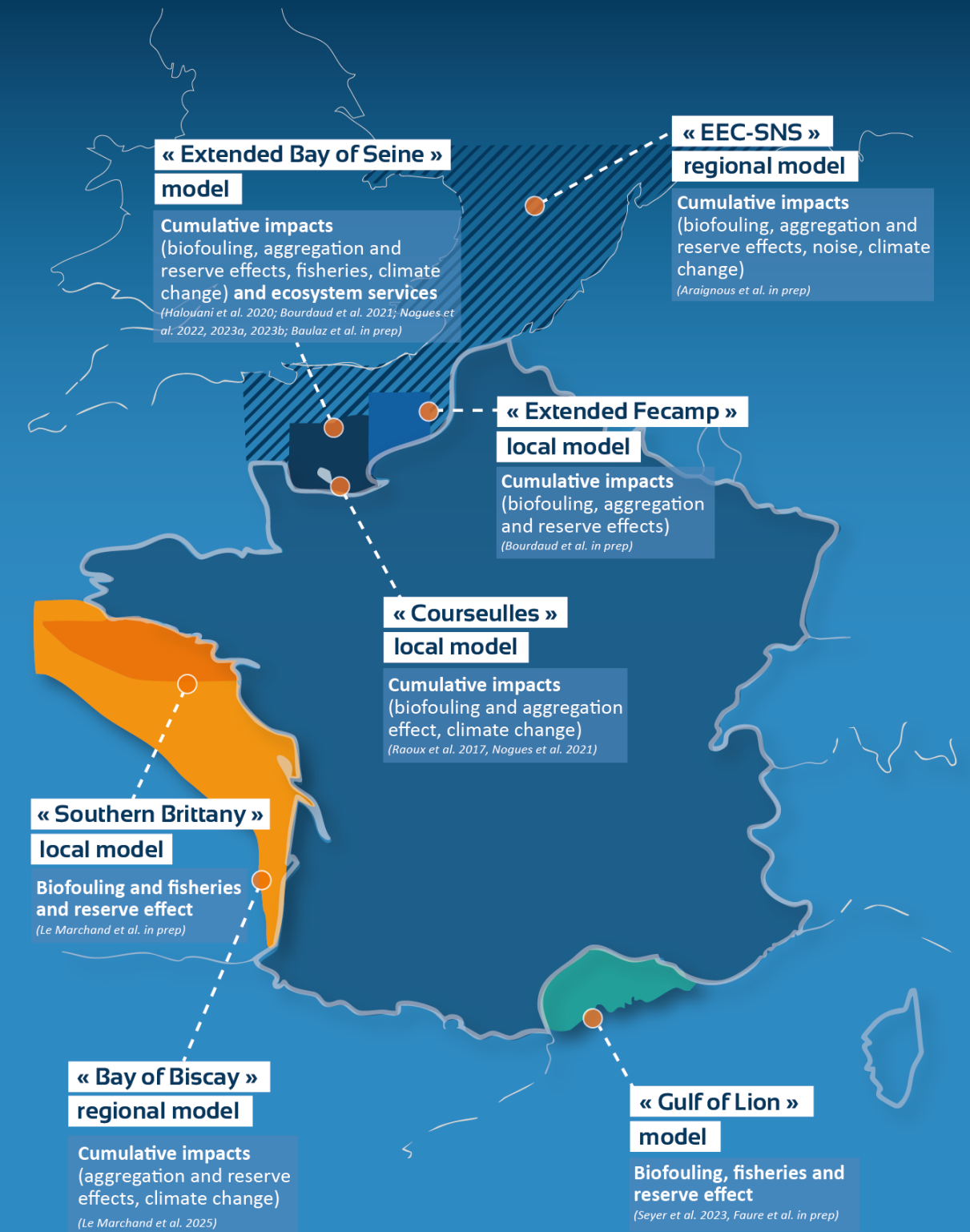
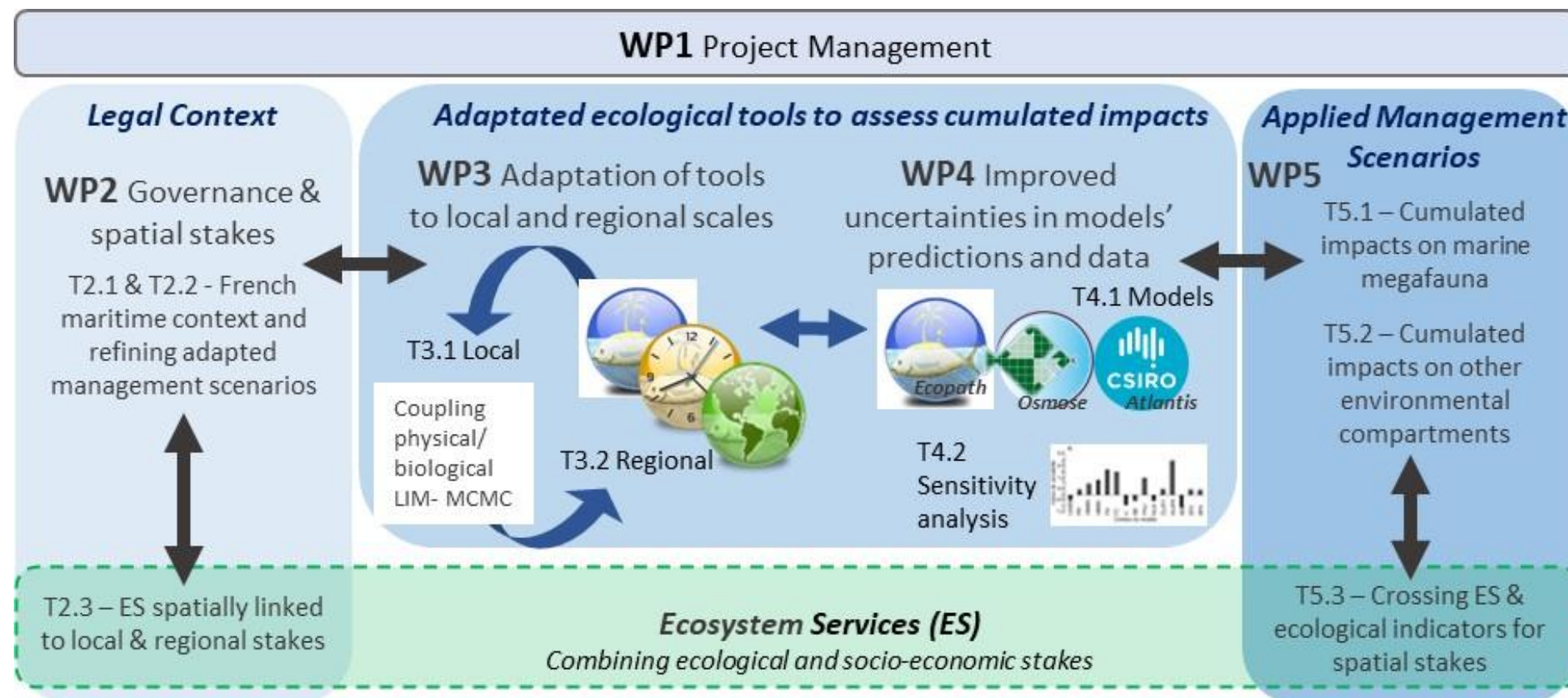
16 partners



21 Deliverables



Objective: Answer a sector need, to have operational tools to cope with foreseen legal obligation of conducting cumulative impacts assessment



Presentations
